

# WIRELESS CCTV

## Police Surveillance Solutions



# Wireless CCTV



**Wireless CCTV Ltd (WCCTV) is the market leading provider of redeployable CCTV cameras and body worn cameras for police forces.**

WCCTV have been working with Police Forces across the UK since 2001, providing overt and covert surveillance systems to assist with a range of crime-fighting and crime-prevention applications.



With the experience of working with over 70% of UK police forces, WCCTV is ideally placed to partner with you on your surveillance technology requirements.

WCCTV's systems transmit live and recorded images over wireless networks including 4G and 3G mobile networks, plus satellite, Wi-Fi and broadband. WCCTV's systems are designed for rapid deployment, and are ideal for temporary, mobile, semi-permanent applications or remote applications.



## WCCTV 4G IR Speed Dome

WCCTV's 4G IR Speed Dome is a Redeployable CCTV system specifically designed to deliver live and recorded HD video via 4G transmission.

As an all-in-one surveillance system, it combines an infrared PTZ camera, local recording capacity (up to 4TB) and wireless transmission technology into a single, lightweight unit.

The system is easy to install, easy to maintain, and can be moved to new locations to meet changing requirements.

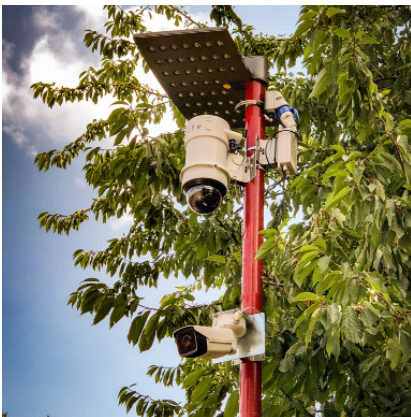
Live and recorded footage can be accessed via 4G, 3G and Wi-Fi connectivity, allowing users to remotely view and download the video via smartphone, tablet, laptop or PC or via integration to an existing control room.

The system contains inbuilt video analytics functionality to provide visual verification and email alarms for a range of intelligent surveillance applications, and inbuilt autotracking functionality for automated monitoring.

The unit features three additional input channels, allowing the addition of secondary cameras such as NPR cameras, and the addition of accessories such as the WCCTV Smart Switch.

### Features and Benefits

- Remote access to live and recorded video via 4G, 3G and Wi-Fi
- Full remote configuration
- Up to 50m IR illumination
- Inbuilt video analytics and auto-tracking capability
- HD images (up to 1080p) delivered over mobile networks



## WCCTV 4G IR Speed Dome with NPR

WCCTV's combined NPR and Redeployable CCTV system utilises the additional output channels of a WCCTV 4G IR Speed Dome to integrate a specialised High Definition Number Plate Recognition Camera.

This unique all-in-one rapid-deployment surveillance system combines all of the benefits of truly redeployable CCTV with advanced NPR technology.

The system harnesses the wireless transmission (4G/3G/Wi-Fi), local recording (up to 4TB) and 360° PTZ field of vision of the WCCTV Speed Dome range to provide a complete situational overview, while the NPR camera delivers crystal-clear images of number plates in all weather and lighting conditions.

The WCCTV Speed Dome + NPR is ideal for strategic data collection along roadways, bridges, tunnels, key road junctions, entrances to buildings or other critical infrastructure. It is also an ideal crime fighting tool against fly-tipping, parking offenses, traffic violations and more.

### Features and Benefits

- High speed, high accuracy number plate recognition
- Full day and night operation
- All weather conditions operation
- Complete situation overview
- Portable and rapidly deployable

## WCCTV Smart Switch

WCCTV's Smart Switch allows a user to remotely control the power to a WCCTV Redeployable Dome camera. It is completely wireless, and can be powered directly from your existing WCCTV Dome camera.

Intermittent or unreliable power supply to street lighting and other installations can cause power surges which may affect the 4G/3G signal of your WCCTV domes. This can also occur following major power outages.

Up to 90% of downtime events can be solved by rebooting, as power-cycling the equipment resets the equipment and restarts it from a known good state.

Being able to reboot equipment remotely allows the user to significantly reduce the need for expensive and time consuming site visits by engineers and reduces the downtime of a system

In most cases, the cost of a WCCTV Smart Switch is cheaper than a single engineer site visit, which makes it very easy to secure a quick return on investment.

There is no complicated installation process for the Smart Switch, and it is incredibly easy to use.

# Wireless CCTV



## WCCTV Body Worn Camera (Record)

WCCTV's Body Worn Camera (Record) captures video, audio and pictures on the move. Designed and manufactured in the UK to meet and exceed recommended standards for Body Worn Cameras, it boasts a wide range of market-leading functionality.

Key features include playback up to 1080p at up to 30 frames per second, with all recordings capturing vital metadata such as date, time, GPS location, device number and user details to ensure evidential integrity.

The unit also contains inbuilt Wi-Fi capability to provide live video transmission and wireless downloading of footage when in range.

It's simple yet functional design lends itself to ease of use, with a simple one-button record mechanism and its lightweight yet durable housing is IP65 rated to protect from dust and water damage.

The device has an illuminated 2.8" front-facing screen - proven to reduce conflict and aggression - and a 120 second pre-event recording buffer to ensure incidents are not missed.

The integral rechargeable battery provides an operating time of up to 17 hours in standby mode or 7 hours in full recording mode.

Charging and downloading of footage can be facilitated via WCCTV's Smart Hub - Docking and Charging Cradles removing the requirement for multiple adapters.

## Features and Benefits

- UK manufactured market-leading body worn camera
- Up to 1080p playback at up to 30fps
- In-built Wi-Fi for transmission and wireless downloading
- GPS location information
- 2.8" front-facing display
- 125° horizontal x 78° vertical field of view
- Local recording up to 128GB providing 90 hours recording
- Durable housing - IP65 rated
- 120 second pre-event recording buffer
- Evidence Management Software for total case management
- Footage metadata contains date, time, location, device and user details for evidential usage
- 7-17 hour operation



## WCCTV Body Worn Camera (Connect)

The WCCTV Body Worn Camera (Connect) is a multi-award-winning UK manufactured body worn camera offering live transmission of video, audio, real-time alerts and GPS information via 4G, 3G and Wi-Fi connectivity.

The transmission element enables a remote connection to a body worn camera in the field, allowing an operator to view live video, communicate with the wearer and understand their position via GPS.

Alternatively, the wearer of the device can send an alert back to a control room, monitoring station or command centre with their live video, GPS location details and a request for assistance.

The WCCTV Body Worn Camera (Connect) is a single unit, with no external cables, battery packs, transmission units or tethering.

The demand for body worn camera technology has been driven by the need to protect the wearer and the public by having greater transparency over how incidents occur and have been dealt with.

However, this is purely retrospective - there is no opportunity for real-time intervention, advice or assistance for a wearer out in the field who is left to rely on his or her own best judgement until a review can take place.

WCCTV's Body Worn Camera (Connect) drastically improves security, safety and decision making, allows supervisors to coordinate tactical or emergency response operations in real-time, enables remote site surveys and offers multiple health and safety benefits.

WCCTV's Body Worn Cameras can be provided as part of a complete body worn video solution when used in conjunction with WCCTV's Evidence Management Software (EMS).

### Features and Benefits

- Live access video via Body Worn Camera
- Complete situational awareness
- 4G, 3G and Wi-Fi with automatic fall-back ensures unrestricted coverage
- GPS location information
- Two way audio
- One-Box system - no wires, cables or external batteries
- 125° horizontal x 78° vertical field of view
- Up to 1080p playback at up to 30fps
- 2.8" front-facing display
- Local recording up to 128GB providing 90 hours recording
- Durable housing - IP65 rated
- 120 second pre-event recording buffer

## Case Studies

WCCTV's product range is designed to meet the needs of the police and local authorities in a cost effective manner. Our extensive customer base includes:

**West Midlands Police** who utilise a number of WCCTV's re-deployable High Definition 4G Mini Domes. Working in conjunction with Birmingham City Council, the police use the cameras to perform a range of public space monitoring applications such as tackling crime and anti social behaviour. The Domes, which have a second camera output, are also being fitted with fixed ANPR cameras to tackle widespread flytipping issues.

**Merseyside Police** use several of WCCTV's 4G Mini Domes to tackle anti-social behaviour and gang activity. The CCTV network which covers the City Centre is unable to effectively track transient gang activity. WCCTV's flexible, portable and redeployable Mini Dome has proved to be an ideal solution, the cameras are moved around the City's boroughs as gang activity moves, with all live and recorded images transmitted back to a central Police Station.

In **Dudley** WCCTV's 4G Mini Domes were at the forefront of surveillance activities and public protection during a recent march by the English Defence League. The high speed live streaming via 4G, combined with the flexible, redeployable nature of the Dome and remote access to evidential quality digital footage made them the ideal solution for such an event.



To find out more about any WCCTV products and services or to arrange a live demonstration please contact one of our UK offices:

### Head Office:

Wireless CCTV Ltd  
Charles Babbage House  
Kingsway Business Park  
Rochdale  
OL16 4NW

t: +44 (0) 1706 63 11 66  
f: +44 (0) 1706 63 11 22  
e: sales@wcctv.com

### Southern Office:

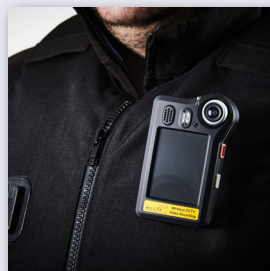
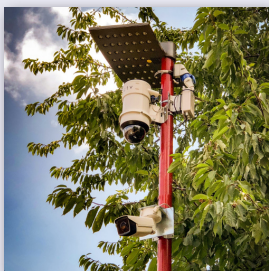
Wireless CCTV Ltd  
Unit 3,  
Scott Road,  
Luton,  
LU3 3BF

t: +44 (0) 1442 260 074  
f: +44 (0) 1706 63 11 22  
e: sales@wcctv.com

**INVESTORS IN PEOPLE™**  
We invest in people Gold



FM 99538



www.wcctv.co.uk  
sales@wcctv.com



FM 99538

**INVESTORS IN PEOPLE™**  
We invest in people Gold

