



STELLIFII

Introducing STELLIFII by WCCTV

ALL-IN-ONE PLATFORM FOR VIDEO
SURVEILLANCE AND INTELLIGENCE GATHERING





Introduction

Stellifi by WCCTV is an innovative loVT platform that transforms traditional CCTV surveillance into a dynamic and intelligent urban safety network.

The concept of Stellifi is simple: video surveillance cameras with true plug-and-play simplicity paired with an innovative cloud-based platform for monitoring and data gathering.

Our scalable and secure software seamlessly merges real-time video streaming with powerful analytical insights, enabling enhanced crime detection and prevention, intuitive and simplistic evidence management and advanced insight via connected IoT devices.

Utilising narrow-bandwidth transmission technology and true WebRTC, Stellifi delivers zero latency live video and instant PTZ commands over wireless networks.

All video transmission and storage meets the highest security standards (AES256 encryption), all data is hosted in the UK, and our product set utilises only EU/North American made components.

Embrace the era of intelligent, secure and scalable public space surveillance with our Stellifi platform, where cloud technology meets CCTV in perfect harmony.



Plug and Play Redeployable CCTV

WCCTV's Stellifi Mini Dome is a UK-manufactured Redeployable CCTV system that delivers live and recorded video footage via 4G/5G mobile networks.

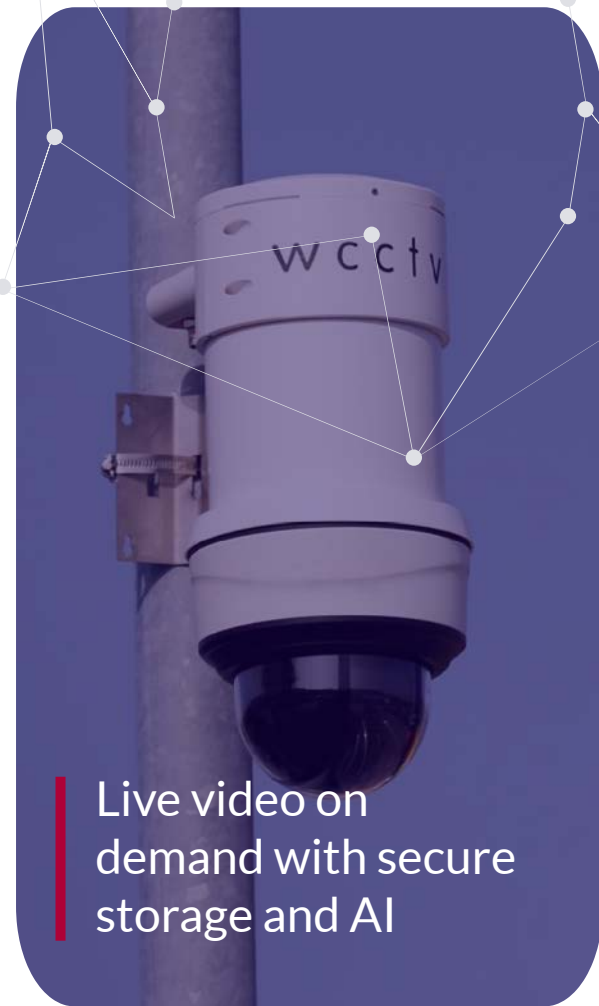
As a truly 'plug-and-play' portable surveillance solution, it can be rapidly deployed for temporary security or targeted surveillance applications.

We combine a market-leading NDAA-approved PTZ camera, onboard storage, video analytics, and mobile transmission technology into an easy-to-install unit.

It boasts an array of market-leading features including 1080p video transmission, 160m IR capability, built-in auto tracking and AI video analytics to assist with automated surveillance.

KEY FEATURES

- 1080p Recorded Video / 720p Live Video
- Remote PTZ Controls
- Advanced Analytics
- 5G Ready Option
- ONVIF S, T and G Compatible
- Optional Built-in 4TB SSD
- Lightweight Design
- 25 FPS Live and Recorded Video
- Wi-Fi 5
- Up To 4 Video Channel Inputs



Live video on demand with secure storage and AI



Cloud-Based EMS Platform



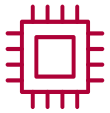
Our cloud-based video management platform is the heart of our advanced Stellifi functionality.

The platform allows for the complete management of your WCCTV cameras, including:

- Live video streaming from multiple Stellifi systems simultaneously
- Stored footage reviews
- Video tagging
- Video sharing
- Recording settings (pre-sets, tours, auto tracking, analytics)
- Camera diagnostics
- Reports and data

Our Stellifi software is built on a UK government-approved cloud infrastructure, with all data stored in the UK and encrypted to the highest video standards.

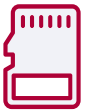
Benefits of Stellifii



Platform is solely designed and supported by WCCTV



Multiple integration options for bespoke applications



5G ready future-proofed technology



Secure by Design Compliant



Remote firmware upgrade capability



Plug and play simplicity



Cloud architecture offers limitless benefits (AI, Smart City, Analytics)



North American / European Technology as standard



ONVIF S, T & G compatibility



No need for expensive DVR / NVRs and on-premise server racks

IoT Data Gathering Solutions

WCCTV's IoT sensors coupled with our redeployable CCTV technology dramatically enhance information and intelligence gathering across a range of applications, including



Local Air Quality Management (LAQM)

WCCTV Pollution Monitors provide detailed air quality measurements in real-time to help identify pollution hotspots at a localised level such as busy road junctions.



Decibel Readings

The high-sensitivity microphone can be utilised to take ongoing measurements in noise polluted areas.



Weather Monitoring

WCCTV weather monitoring stations provide critical information that helps local councils plan and respond effectively to weather challenges, ensuring the safety and well-being of their communities.

*These devices are not certified



Why Stellifi?

Stellifi will deliver a range of benefits that improves the day-to-day management of your WCCTV equipment.

As we move into an era where technology shapes security, the Stellifi Platform stands at the forefront, seamlessly combining precision, intelligence, and vigilance for a safer world.



Easier management of transmitters



Quicker access to footage



Future-proofed technology



Easier user management



Enhanced audit log capability



Audio capability



Increased security



Easier to configure pre-sets and tours



Easier to pinpoint incidents



STELLIFII



Get in touch

FOR MORE INFORMATION VISIT:
WCCTV.CO.UK